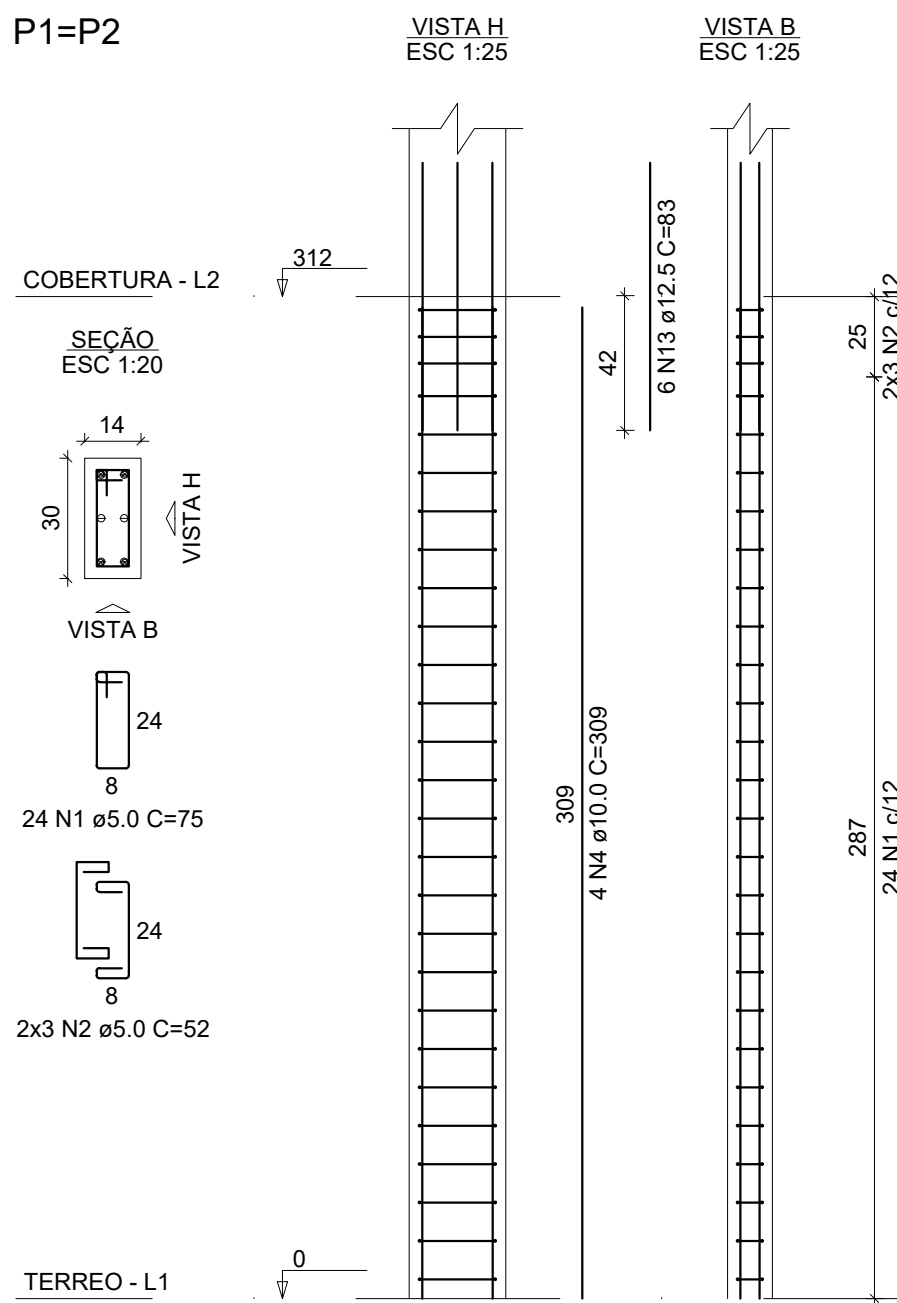
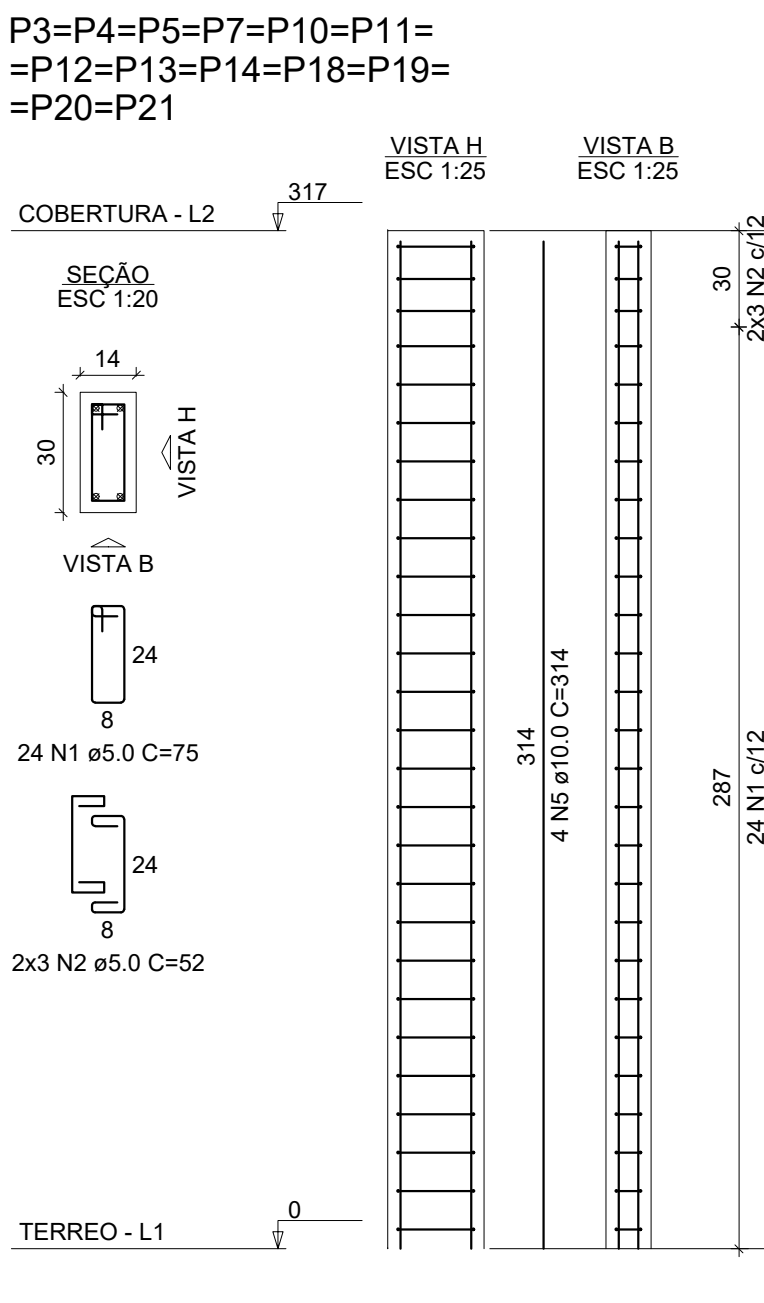


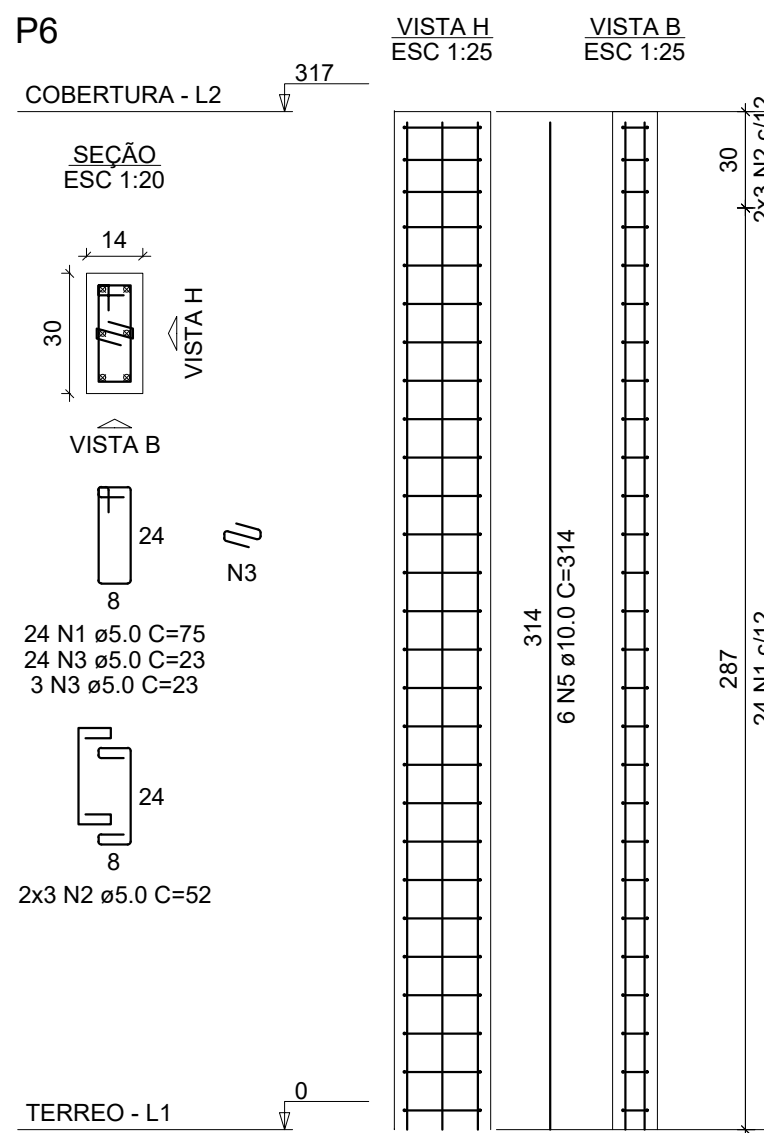
P1=P2



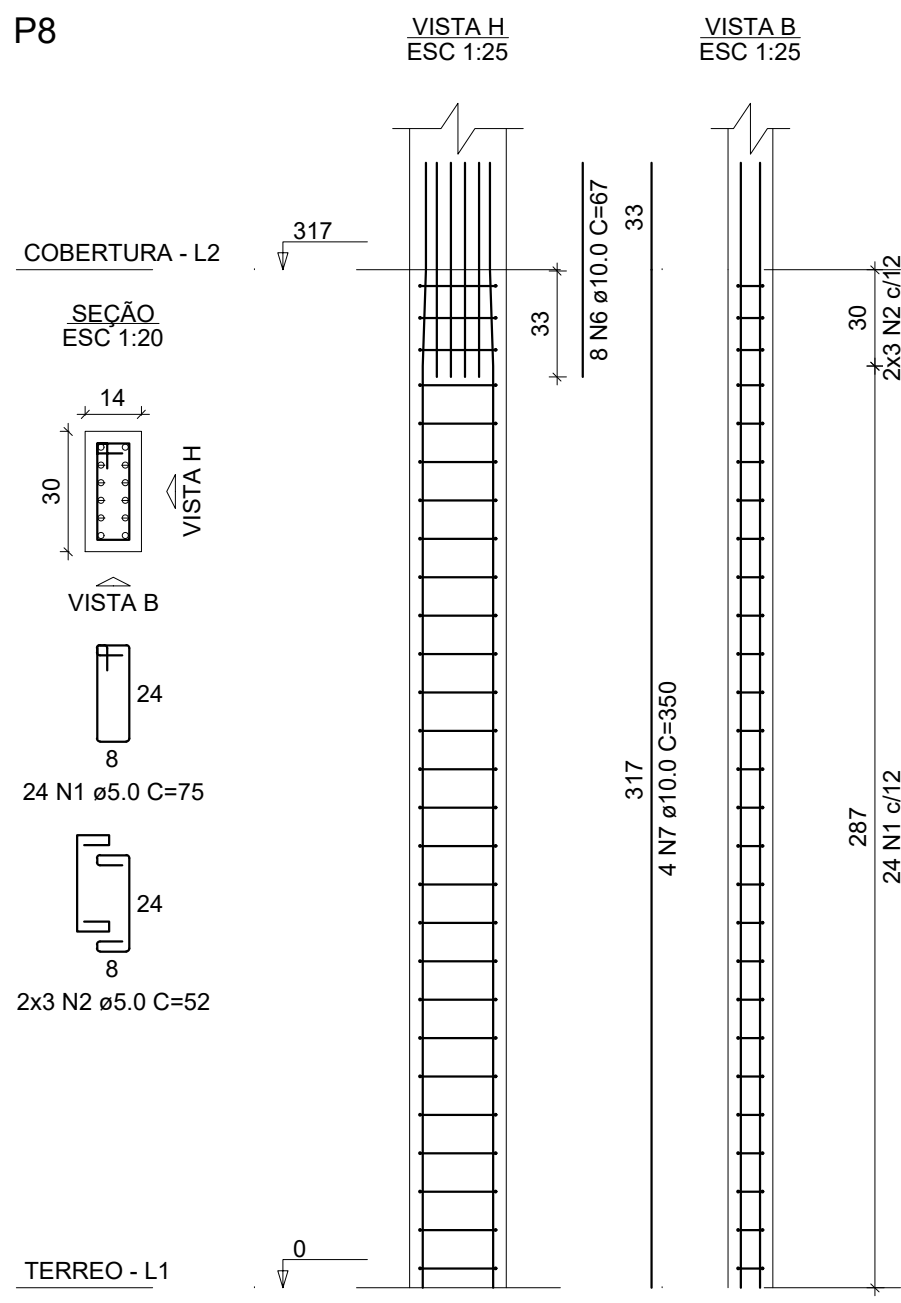
P3=P4=P5=P7=P10=P11=  
=P12=P13=P14=P18=P19=  
=P20=P21



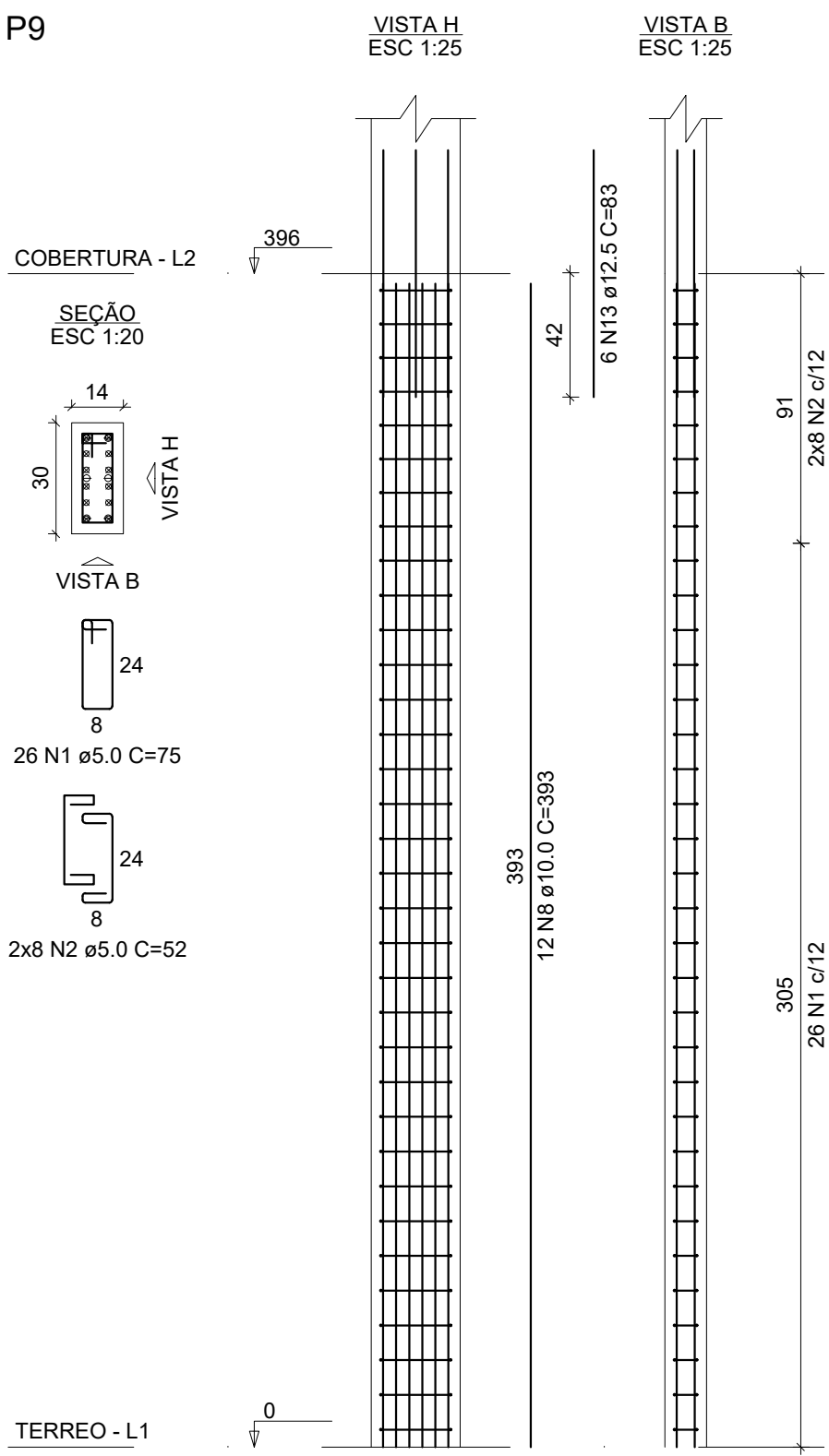
P6



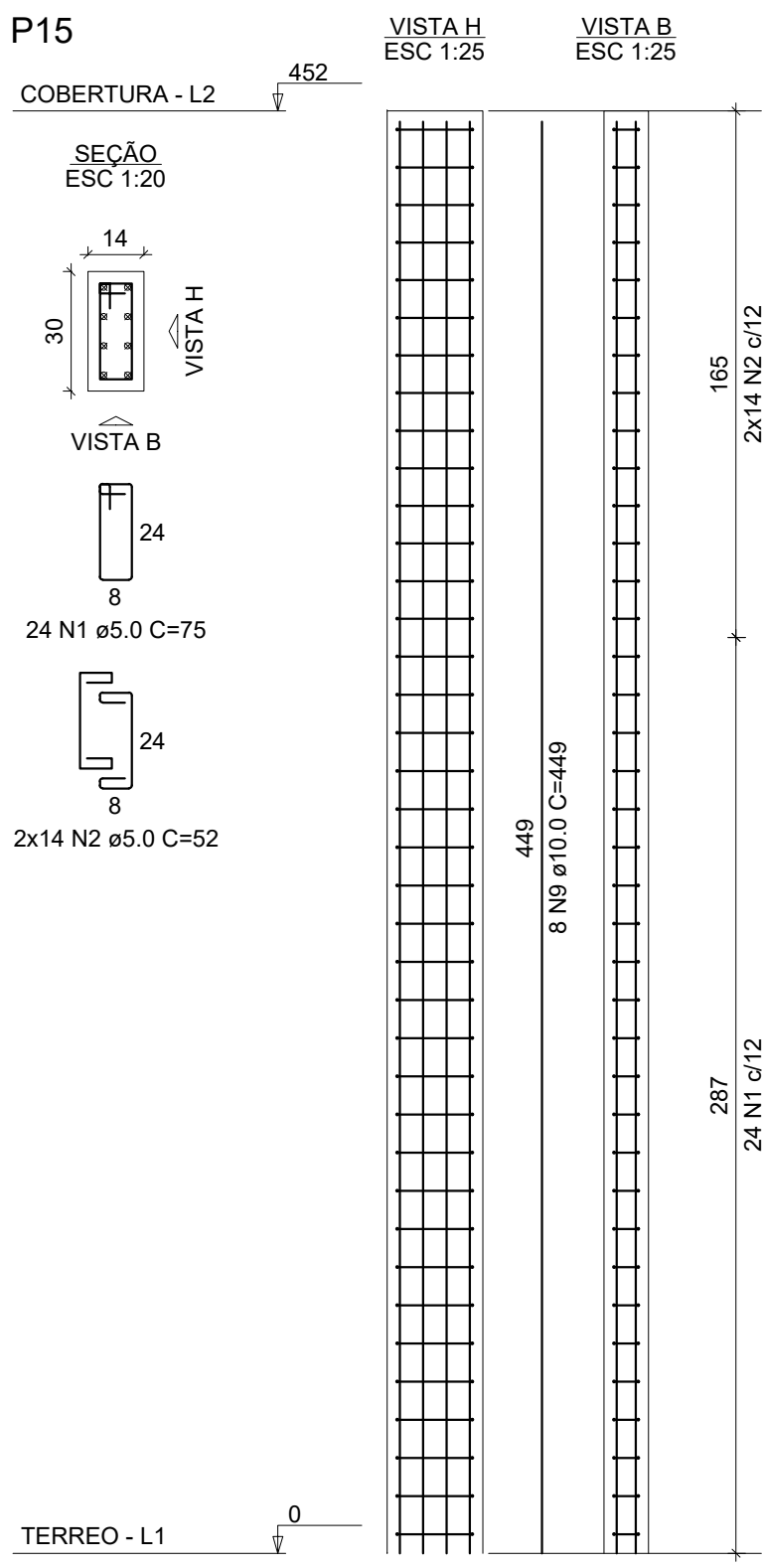
P8



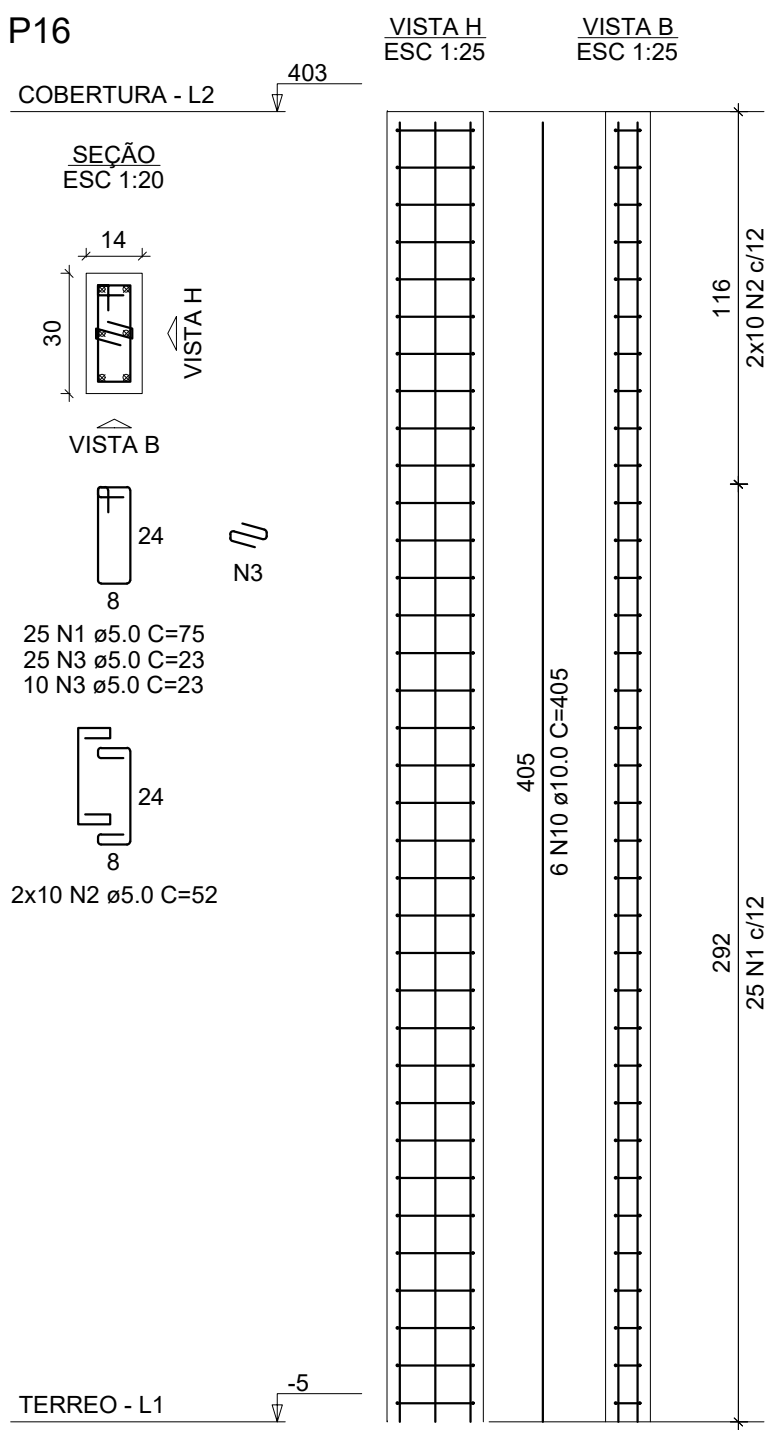
P9



P15



P16



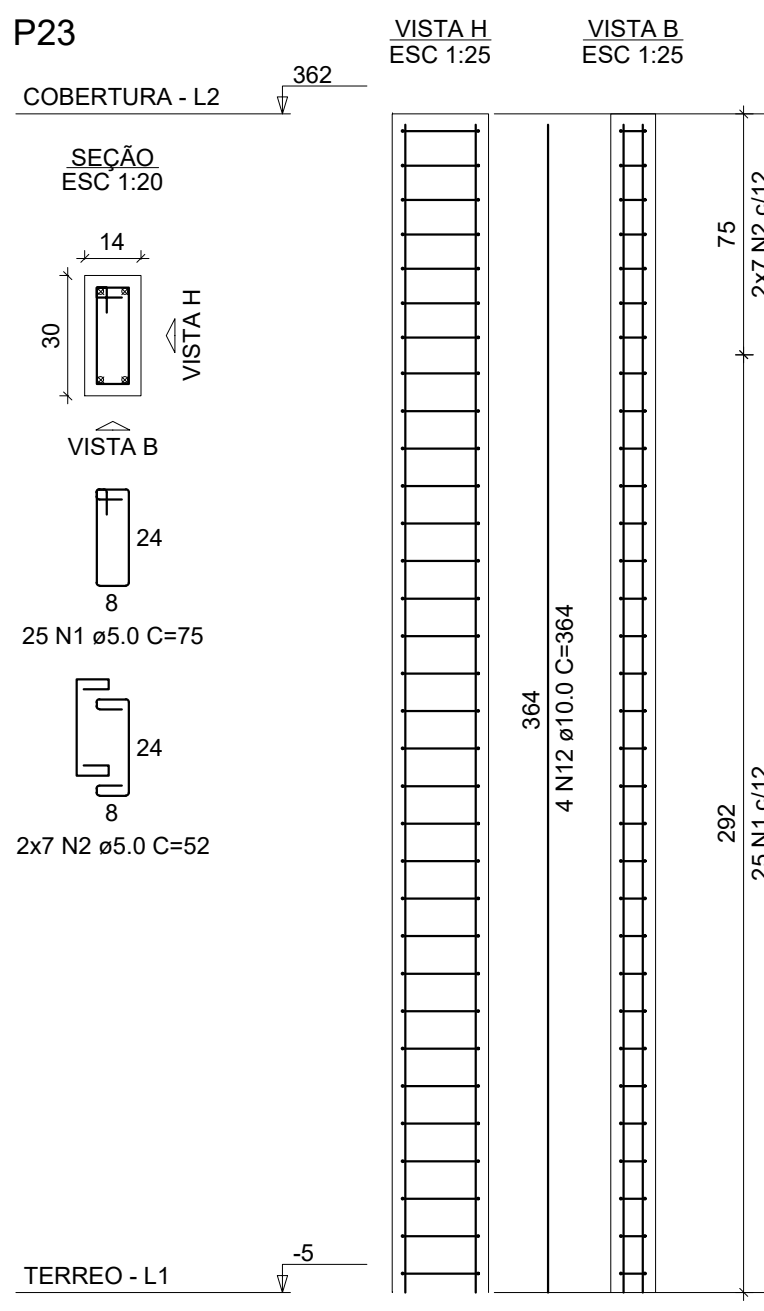
RELAÇÃO DO AÇO					
AÇO	N	DIAM (mm)	QUANT	C.UNIT (cm)	C.TOTAL (cm)
CA80	1	5.0	557	75	41775
CA80	2	5.0	222	52	11544
CA80	3	5.0	62	23	1426
CA80	4	10.0	8	309	2472
CA80	5	10.0	58	314	18212
CA80	6	10.0	8	67	538
CA80	7	10.0	4	350	1400
CA80	8	10.0	12	383	4716
CA80	9	10.0	8	449	3592
CA80	10	10.0	10	405	4050
CA80	11	10.0	4	406	1624
CA80	12	10.0	4	364	1456
CA80	13	12.5	18	63	1134

RESUMO DO AÇO				
AÇO	DIAM (mm)	C. TOTAL (m)	PESO + 0% (kg)	
CA80	10.0	380.6	234.6	
CA80	12.5	14.9	14.4	
CA80	5.0	547.5	84.4	
PESO TOTAL (kg)				
CA80	249			
CA80	84.4			

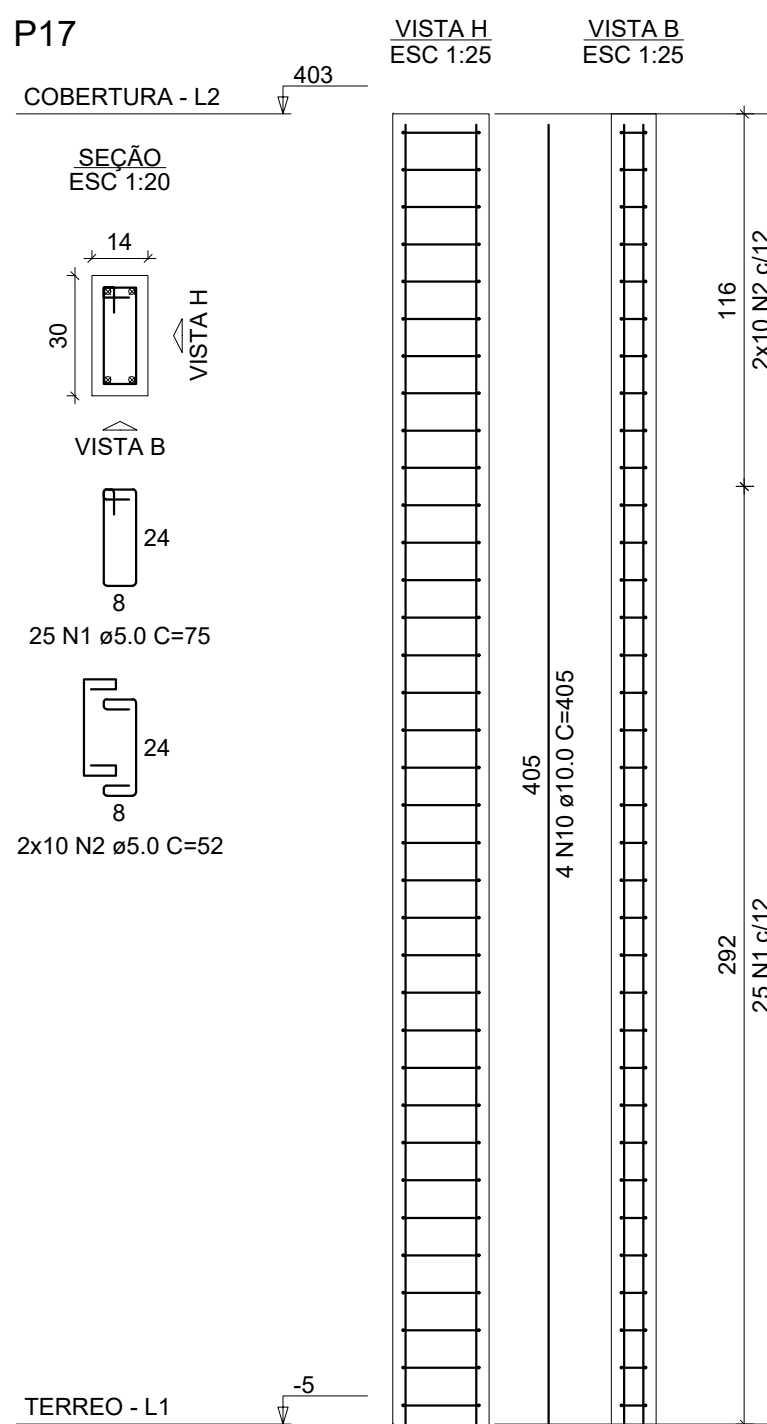
Volume de concreto (C-30) = 3.28 m³  
Área de forma = 68.81 m²

AÇO=CA-50 e G0;  
Fy = 5.000 Kg/cm² e Fy = 6.000 Kg/cm² respectivamente;  
fck = 250 Kg/cm² (FUNDAÇÃO);  
fck = 300 Kg/cm² (ESTRUTURA).

P23



P17



P22

